

Microwave Motion Sensor (RIN-MS701)



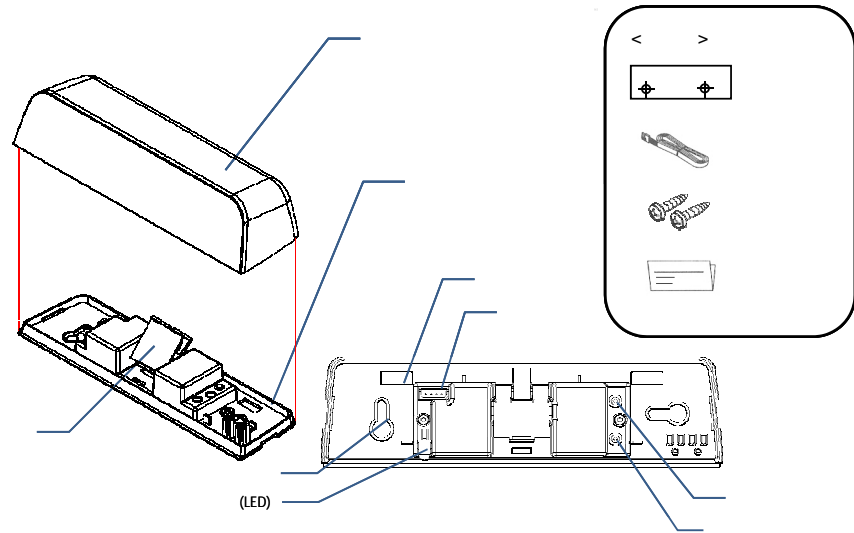
1

- RIN-MS701 24.125GHz
- DC12V~30V, AC12V~24V

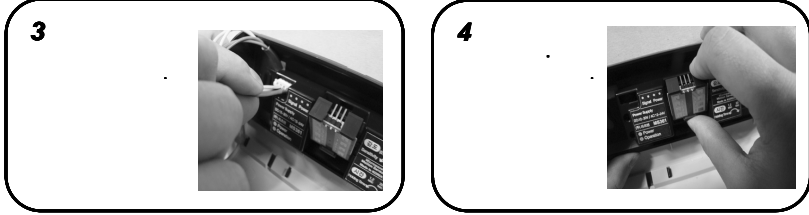
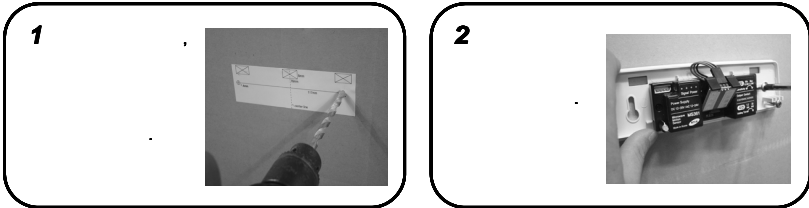
2

DC12~30V, AC12~24V	150mA(DC12V, +25)
24.125GHz	0.6A/125VAC, 1A/24VDC
1.2 ~ 20 (:1.2)	3.0M
4*3 (W*D) (2.2M)	-40 ~ +60 /0~90% ()

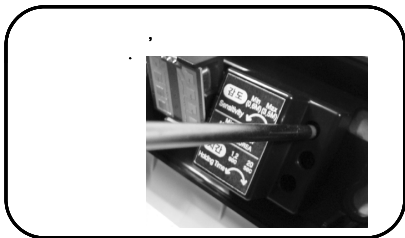
3



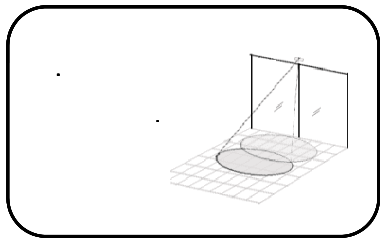
4



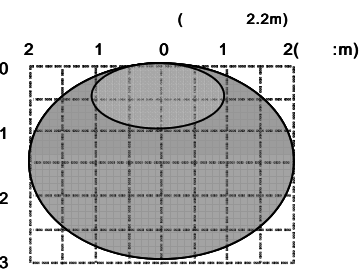
5



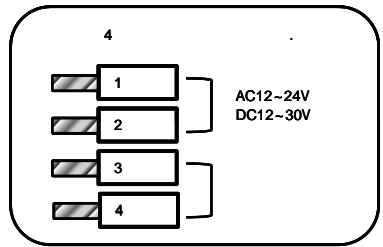
6



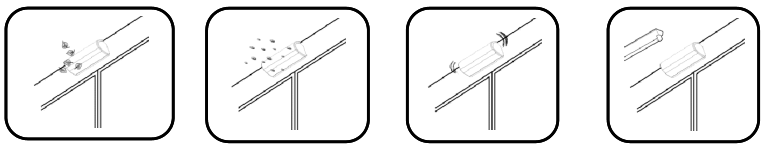
7



8



9

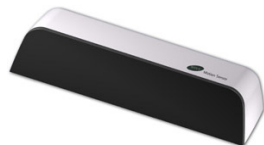


가

Microwave Motion Sensor (RIN-MS701)

Instruction Manual

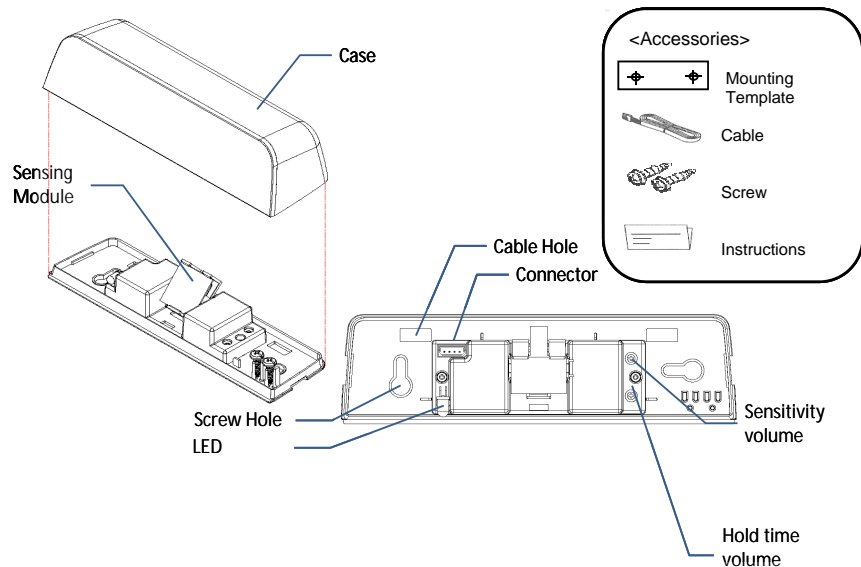
This product is a highly sensitive, high performance product that serves to control similar devices for the opening and closing of automatic doors by detecting the movement of humans or object. For the safe and accurate use of the product, please read this instruction manual until the end.



1 Technical specifications

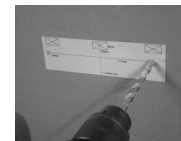
Power supply:	DC12~30V, AC12~24V	Current consumption:	150mA(DC12V, +25)
Microwave module:	24.125GHz	Contact capacity:	0.5A/125VAC, 1A/24VDC
Hold time:	1.2 ~ 20 Sec. (Standard: 1.2Sec.)	Max Install height :	3.0M
Detecting feild:	4*3 (W*D) (Height 2.2M)	Operating Tem/Humi:	-40 ~+60 /0~90%(Non condensing)

2 General Information



3 Installation Guide

1 Apply mounting template to transom and make holes.



2 Fix the case to the wall



3 Connect power line to sensor main body



4 Tilt angle up or down to change sensing field.



Caution

Do not supply the power during engineering work of installation.
Do not disassemble or modify the device, it may cause fire or electric shock

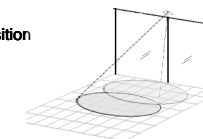
4 Sensitivity Adjustment

Sensitivity is adjustable by setting volume on the main body



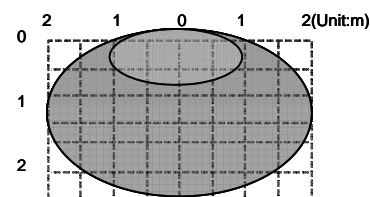
5 Sensing Feild

Changing position of pattern



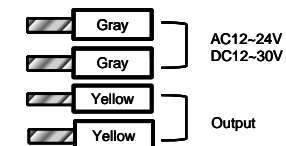
6 Detection Field

(Mounting Height : 2.2m)

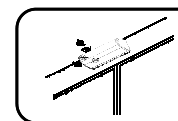


7 Wiring diagram

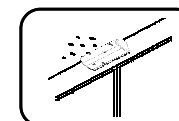
2 power ines & 2 relay contact lines.



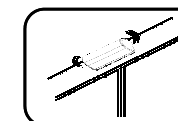
8 Mounting Information



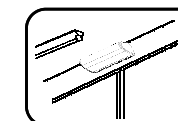
Avoid moving objects close to the sensor



Avoid heavy rain and snow



Avoid vibration



Avoid fluorescent light sources